



MSW HYBRID PROGRAM, CSU STANISLAUS

*INTEGRATIVE CLINICAL PRACTICE
SPECIALIZATION FOR HEALTH, MENTAL
HEALTH, AND BEHAVIORAL HEALTH
SETTINGS*

Information Sessions Fall 2024

History of the Program



- 1st Cohort in 1993-94
- 1st Graduating Class 1996
- Received Accreditation 1998
 - Three accreditation reaffirmations: 2001, 2009, 2018
 - Currently accredited through 2026
 - 1000+ Graduates and counting!



Why a Hybrid MSW Program in *Integrative Clinical Practice Specialization for Health, Mental Health, and Behavioral Health Settings?*



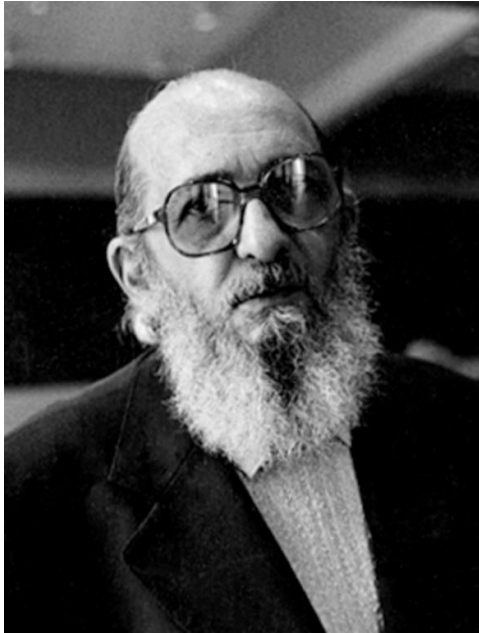
- U.S. Department of Labor reported that the social services field would add 78,300 new jobs each year, an increase of 12% (2022)
- Job prospects (substance abuse & mental health social workers) projected to grow at 23% between 2020-2030 to create 41,000 new openings (Bureau of Labor Statistics)
- By 2028, California will have 28% fewer social workers, psychologists, and counselors than will be necessary to meet the projected demand (CA Health Care Foundation)



REALIGNMENT

How we approach teaching/learning

MSW Hybrid Program, CSU
Stanislaus



No one educates anyone else nor do we educate ourselves, we educate one another in communion in the context of living in this world.

~ Paulo Freire

Program Overview: 60 units, 24 months

ACCELERATED SCHEDULE

- ❑ 2 courses every 8 weeks
- ❑ 2 face-to-face class sessions per course, including field (one Saturday per month) @ CSU Stan Stockton Campus
- ❑ Remainder of course work completed online (asynchronous & synchronous)
- ❑ Direct social work practice courses are included in every 8-week academic session

Summer Block Placement: Summer 2025 & 2026

SOCIAL WORK

Celebrating Strengths



Never doubt that a small group of thoughtful, committed people can change the world. Indeed, it is the only thing that ever has.
Margaret Mead

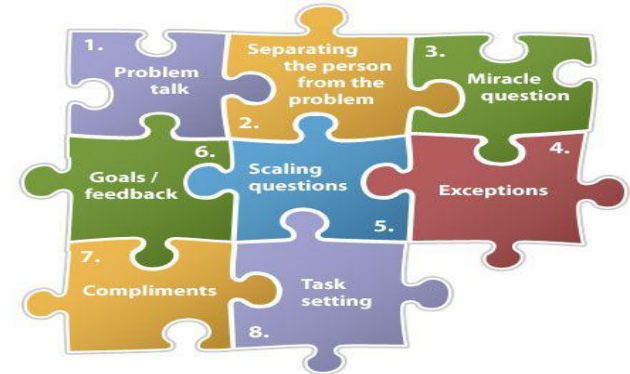
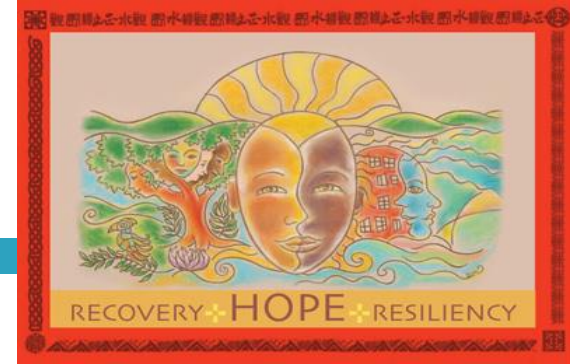
SOCIAL WORKERS STRENGTHEN COMMUNITIES

- Focus is on practicing and integrating skills learned in coursework
- 40 hours per week, 13 weeks (500 hours per summer for 2 summers)
- Includes:
 - ▣ One-to-one supervision from MSW Field Instructor
 - ▣ 2 hours weekly seminar in a local community
 - ▣ 2 all day Saturday Integrative seminars- Stockton Center



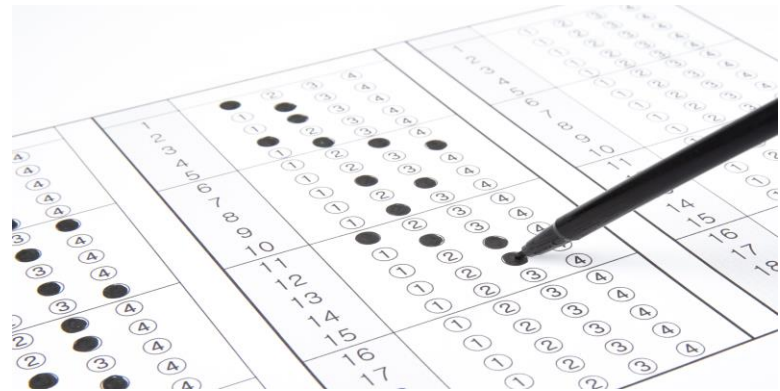
Curricular Focus

- Competency based social work practice degree
- Socially just clinical practice models (*SFBT, CBT, Narrative*)
- Integrative practice approach (*change factors, practice approaches*)
- Clinical specialization courses
 - Assessments (*Psychosocial assessments, DSM*)
 - Integrated Behavioral Health (*resilience/wellness model*)
 - Addictions (*AOD/addictions diagnosis treatment*)
 - Trauma treatment models (*PTSD, child abuse, community, military, migration, DV*)



Comprehensive Exam

- Focuses on HBSE, Practice, Research & Policy for clinical practice
- Builds critical thinking & knowledge review for future licensing



MSW Program Faculty



Sevaughn Banks, Ph.D.



Sara Cadalig, DSW,
LCSW



May Ying Ly, Ph.D.



Jenell Thompson, M.Ed.,
LCSW, PPSC



Yvonne Berenguer, MSW



Dawn Costa, LCSW



Valerie Leyva, Ph.D.,
LCSW



Shradha Tibrewal, Ph.D.
· MSW Hybrid Program
Coordinator



Pollie Bith-Melander,
Ph.D., MSW Program
Department Chair



Katie Galvin, Ph.D.



Kirsten Jasek-Rysdahl,
MA, MSW



Paul Wright, Ed.D.



Kilolo Brodie, Ph.D.



John Garcia, Ph.D.



Jane Rousseau, Ph.D.



Nancy Zamora, LCSW,
PPSC
Field Director



Anacani Rocha, MSW

Technological Needs and Support

You will need:

- ❑ A computer and reliable internet connection that will support streaming video & video conferencing.
- ❑ Enabled webcam and microphone
 - ▣ Headset microphone preferred

The University provides:

- ❑ Help desk for general trouble shooting and support



Application Process and Timeline

□ University Application

- Online via <https://www2.calstate.edu/apply>
- Requirements include:
 - A bachelor's degree from an accredited college or university.
 - A grade point average of 2.5 or better in the last 60 units is required.

□ MSW Program Application

- Online via <https://www2.calstate.edu/apply>
- Requirements include:
 - Liberal arts background
 - Voluntary and/or paid experience in human services
 - Computer literacy and reliable internet connection

Note: When completing the application in CalStateApply, you will be applying to both the University **and** the MSW Program

Autobiographical Statement, Resume & References

Autobiographical Statement

This autobiographical statement should reflect your experience in light of the MSW Program mission statement, should be typewritten (1200-1500 words), and should enable the Admissions Committee to know something of you as a person, your writing ability, your understanding of social work, and your own life experiences.

Resume

The resume should outline your voluntary and/or paid experience in human services.

References

Three academic and/or professional references from individuals who can address qualifications for graduate study in social work, academic readiness, and work performance and proficiency is required. All recommendations must be submitted to CalStateApply directly from your reference

Application Do's and Don'ts

Do's

- Start your application early.
- Talk to your references early. **We, the department, and you, the applicant, do not have the ability to upload documents on the recommender's behalf.**
- Make sure your autobiographical statement and resume are both uploaded the right way. What you see in the review screen is exactly what the reviewer will see.
- Contact the department if you have any questions on the status of your application.
- **Please be patient as we complete the review process 😊**

Don'ts

- Do not ask your friends to be references. References should be people who have supervised you and/or know your academic abilities.
- Do not forward documents to the department to upload on your behalf, or on your recommender's behalf. **We are unable to upload documents to your application.**
- Do not wait until the last minute to submit your transcripts from **all** colleges and/or universities attended.

Friendly Reminders

- All application components must be submitted no later than the February 1st, 2024 deadline.
- This includes:
 - Reference letters
 - Transcripts from **all** colleges/universities attended (except for Stanislaus State graduates who have not attended college elsewhere since graduation)
 - Resume and autobiographical statement
 - The application fee to Graduate School through the CalStateApply portal

Tuition and Fees

- ❑ \$35,000
- ❑ Financial aid may be available
 - ❑ *unsubsidized student loans*
 - ❑ Financial aid distributes during fall and spring semesters **only**. You must save your financial aid for the summer tuition payment.
- ❑ Contact CSU Stan Financial Aid office
 - ❑ *Complete FAFSA if you are considering this program*



Contact Information

mcaldie@csustan.edu

mswhybrid@csustan.edu

Main Office: 209-667-3091

<https://www.csustan.edu/uee/msw-hybrid>

